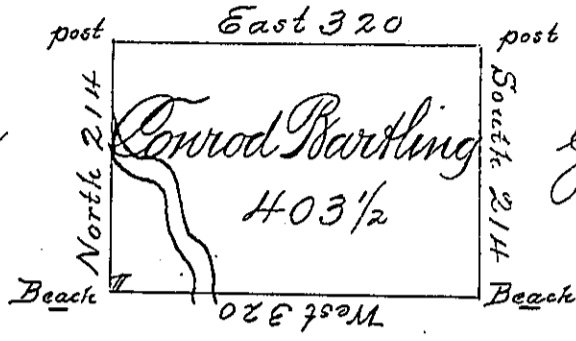


Edward Batholomew

Charles Biddle



George Ashton

William Barton

Situate on the Waters of Lake Erie in Allegheny
 County Survey'd on the 13th day of Sept^r 1795 to Conrod
 Bartling on his Warrant dated 30th May 1792 Con-
 taining Four hundred three Acres and half &
 allow^d

Dan^l Brodhead Esq^r
 Surd Gen^l

Tho^s Rees Esq

IN TESTIMONY that the above is a copy of the original remaining on file in
 the Department of Internal Affairs of Pennsylvania, made
 conformably to an Act of Assembly approved the 16th day of
 February, 1833, I have hereunto set my Hand and caused
 the Seal of said Department to be affixed at Harrisburg,
 this fourth day of June 1901.

James W. Pitta
 Secretary of Internal Affairs.